

Powerpoint - motion paths and grouping

Introduction

Grouping allows a user to combine many elements and treat them as one single element. Motion paths are a custom animation which allows elements to be moved around a slide however you want.

When combined, these two techniques allow for rudimentary movie making - excellent for explaining some abstract concepts.

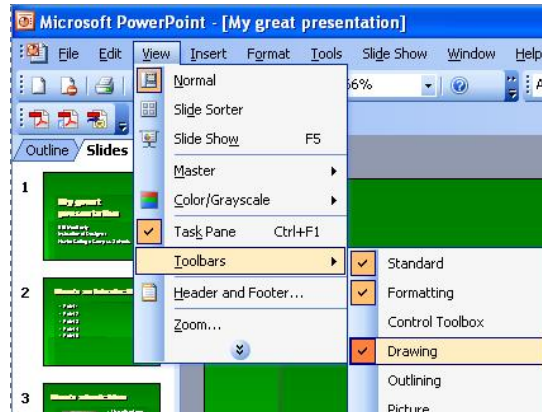
Considerations

This HOWTO assumes users are comfortable using powerpoint and windows.

HOWTO:

Grouping

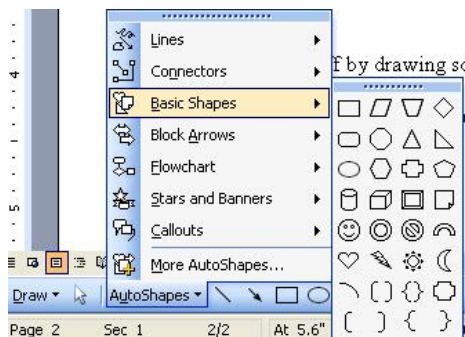
Grouping takes many elements and squishes them together as one. This is a good thing because you can move, edit, and change many elements as a single element.



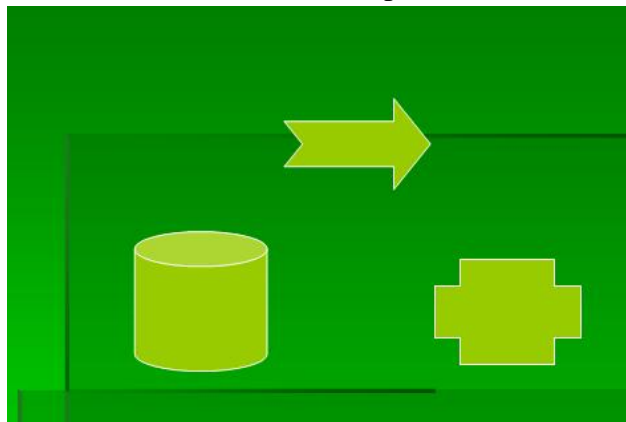
Let's start off by drawing some shapes.

Click on the **view** menu, and then **toolbars** and **drawing**.

Click on **autoshapecs**, and then on **basic shapes**. Choose two or three shapes to insert into your powerpoint presentation.

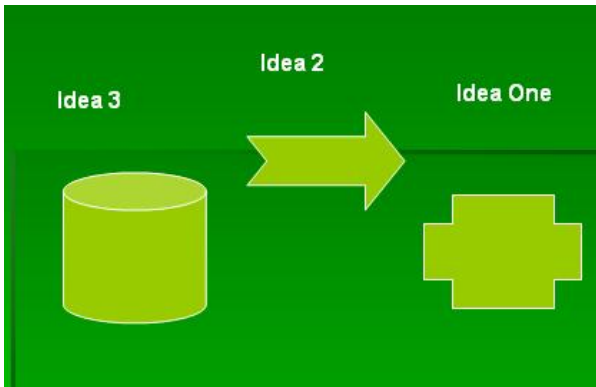


Here's an example.

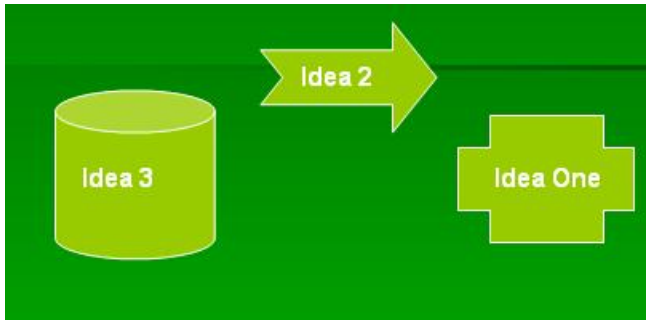


Now insert some text. Click on the **insert menu** and then click on **text box**. Type some text. Do this two or three times.

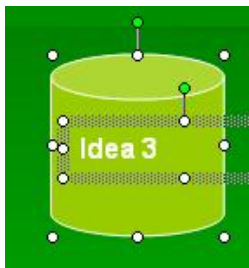
Here's an example...



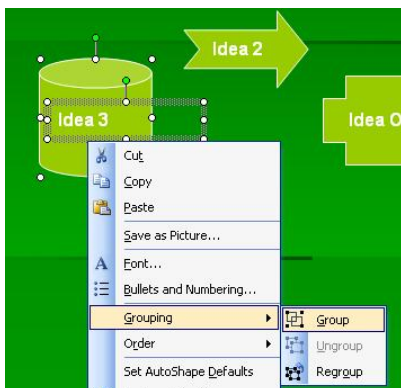
Drag the text onto the shapes.



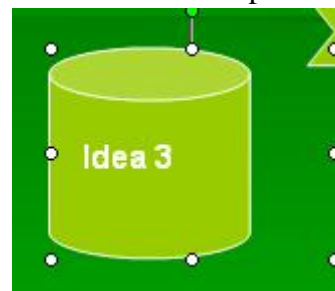
Hold down the shift key as you click a shape and the text inside it. Both elements should be selected.



Right click on the shapes, and note the **grouping** menu. Simply click **group**.



Here's an example...



Motion Paths

Click on the **task pane**, and choose **custom animation**.

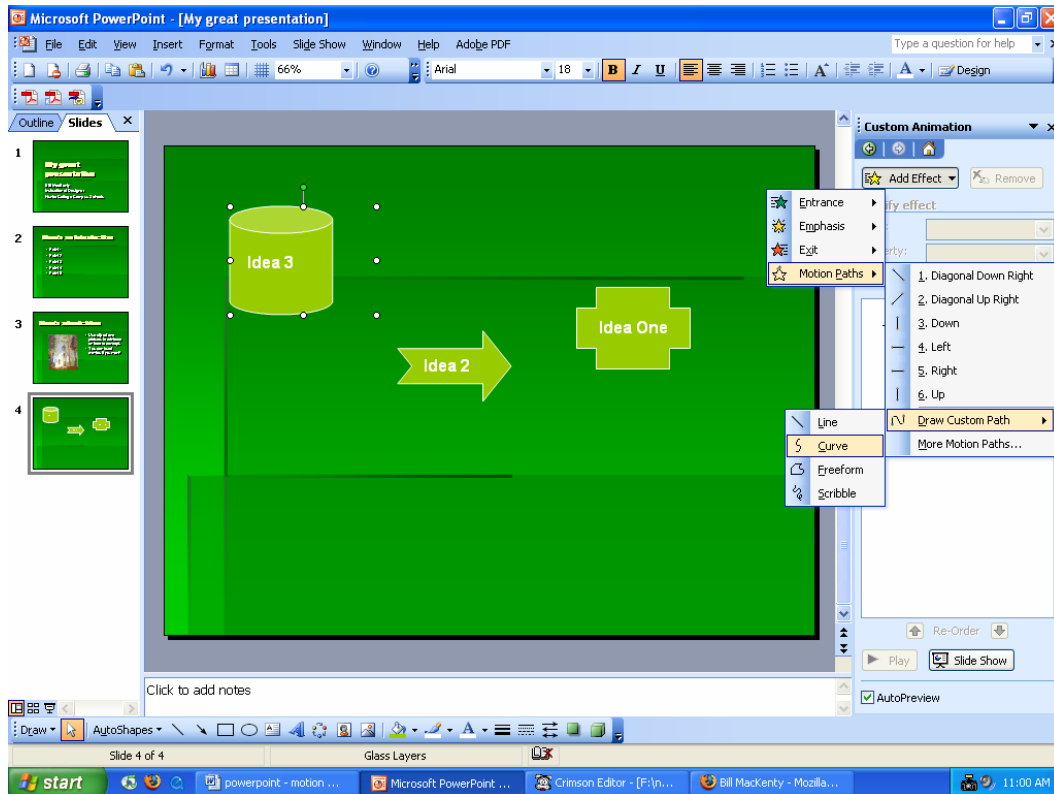
Click on the object you want to animate.

Click on Add Effect

Click on Motion Paths

Click on Draw Custom Path

Click on Freeform, draw the path you want your object to move.



This will create a path for the element to follow.

Enjoy!